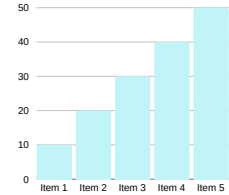


# Geometry with Data Analysis

Course Description and Expectations

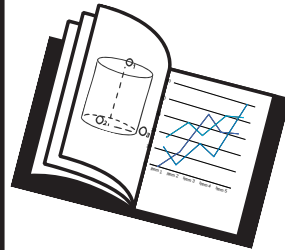
**MS. WILKERSON ROOM 606**



Geometry with Data Analysis is a newly designed course. The primary goal is to build essential concepts necessary for students to meet postsecondary goals. This course focuses on developing mathematical knowledge and skills through visual representations. The course also concentrates on data analysis, which provides students with tools to describe, show, and summarize data in the real world around them.

## Supplies Needed:

- \*Geometry Binder
- \*Loose-Leaf Paper
- \*5 Divider Tabs  
Notes, Homework, Bell Ringers, Handouts, Projects
- \*Pencils
- \*Colored Pencils/Markers
- \*Highlighters
- \*Hand Sanitizer
- \*Scientific Calculator (TI-30X IIS)



### What I Expect:

- ~You will be in class every day unless you are sick or have an excused absence.
- ~You will be on time every day and have all of your materials including your book.
- ~You will not abuse bathroom privileges.
- ~You will follow the behavior rules and guidelines outlined in the student handbook.
- ~You will ask questions and seek help when you need to.
- ~You will be respectful of your classmates and teacher at all times.
- ~You will not eat or drink in the classroom at any time.
- ~You will not use your cell phone for any purpose at any time.

### What You Can Expect:

- ~I will be in class every day unless I am sick or at a school related function.
- ~I will begin class as soon as the tardy bell rings.
- ~I will make this class as interesting and engaging as I possibly can.
- ~I will help you and answer your questions until you feel confident and prepared.
- ~I will challenge you and have high expectations of you.
- ~I will provide an organized, clean, motivating, and accepting learning environment.
- ~I will respect you and work hard to give you the best math experience possible.
- ~I will provide consequences when rules aren't followed or behavior is a problem.

### IMPORTANT INFORMATION FOR COMMUNICATION:

#### MUST HAVE APPS:

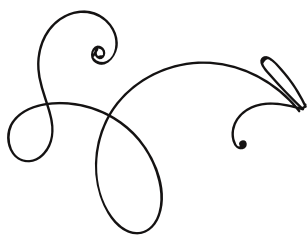


**Clever**

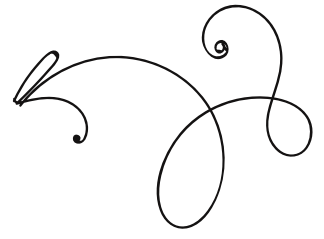
[dwilkinson@saralandboe.org](mailto:dwilkinson@saralandboe.org)



Initial: \_\_\_\_\_



# YOUR GRADE



## Daily Grades 30%

Daily grades will include but are not limited to classwork, notebook checks, small projects, partner activities, bell ringers, and homework. Notebook checks will be conducted on a regular basis and are designed to hold you accountable for organization and homework corrections. Classwork and group activities are always due at the end of class. Any assignments turned in late (within 3 days) will result in half credit being given.

**No late work will be accepted after 3 days!**

## Standards-Based Assessments 70%

Standards-Based Assessments will include quizzes, tests and projects and will be given on a weekly basis. These will be announced in advanced. Quizzes and tests will include multiple choice, true-false, short answer and discussion type items. Homework must be completed and study guides must be utilized in order to be successful on tests.

## Homework

Homework is essential to your success in this class. An effort grade will be given for homework completion. Full credit will be given if work is shown and ALL problems have been attempted and completed. Half credit will be given when problems and/or work is missing or directions weren't followed. Completing homework is important because it will be part of the weekly notebook checks. **All homework assignments will be submitted through Schoology in pdf format and will be due by 7:30 am the following day. Any assignment submitted after this time will be considered late.**



It is your responsibility to complete makeup work within 3 days of an excused absence.

Cell phones, cell phone charging, or headphones are never allowed unless permission is given.

Cell Phones will be collected at the beginning of class and returned at the end of class.



Initial: \_\_\_\_\_

### **Generative Artificial Intelligence Statement**

This course will allow—in some cases, even encourage—the use of generative artificial intelligence (GAI) techniques in some assignments. Unless otherwise indicated, the default is that this kind of use is prohibited. GAI use must be recognized and referenced. Academic misconduct will be the result of breaking this policy and could result in loss of credit for the assignment(s) as referenced in the cheating policy in the Saraland City Schools' Student Handbook. It is the student's responsibility to follow the requirements of each course or assignment.